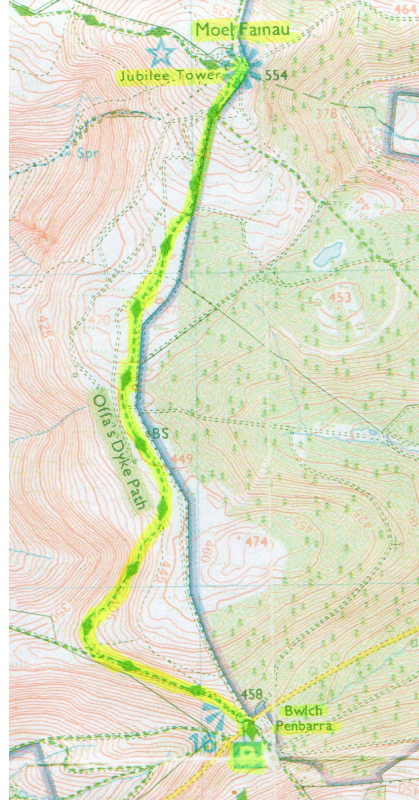


## Moel Famau Jubilee Tower: – Flintshire.



**Height:**

**1670 feet or 549 metres**

**Distance to summit:**

**1.75 miles or 2.6 kilometres**

**Time to summit:**

**1 hour to 1.5 hours.**

**Difficulty:**

**Reasonably easy. The climb is steep short sections near the summit. Take plenty of breaks and enjoy the views.**

**Getting there:**

**From the A494 via Loggerheads, follow the signs (right hand side) to Moel Famau Country Park. Follow B road to car parks at Bwlch Pen Barras.**

## **Parking:**

**Park in the right hand car park. Please note that this is a pay-and-display park and the cost is £1.00.**

## **The Area**

**The area is heather moorland with low bilberry bushes and some gorse. The area is common land and is jointly managed by the farmers and The Forestry Commission.**

**There is an information board close to the start of your walk.**

**You may also notice some square areas in the heather. These have been deliberately cut back to encourage ground nesting birds. About half way up, on the right, you may notice a large area of burnt vegetation. This happened when controlled burning got out of hand. It took 3 days to completely bring the fire under control.**

## **Directions.**

**Leave the car park via the gate and follow the broad roadway. You are now on Offa's Dyke Path.**



**Your walk to the top follows this well maintained path and affords you stunning views over the Clwyd Valley, along the coastal plain and into Snowdonia.**

**About half way up you will see an ancient Briton hill fort. This is down to your left. You may notice the typical rings of ramparts surrounding the summit of the hill. This place is known as Moel y Gaer.**

**Keep to this broad path all the way to the summit.**



**At the summit.**

**If you are lucky enough to have a clear day you will have commanding views of the surrounding area. The tower itself has brass plates installed on the tops of the walls. These indicate points of interest.**

**Here are some questions for you to answer;**

- 1. How far is it to Chepstow and Prestatyn?**
- 2. In which direction is Snowdonia.**
- 3. Why was the Jubilee Tower built and when**
- 4. What other activities take place – look for sign near the start of your walk.**

**Return walk.**

**Retrace the steps of your ascent.**

**Refreshments.**

**At the lower car park there is snack bar – not open all year round. Further afield are the We Three at Loggerheads and Cafe Florence in Loggerheads Country Park.**